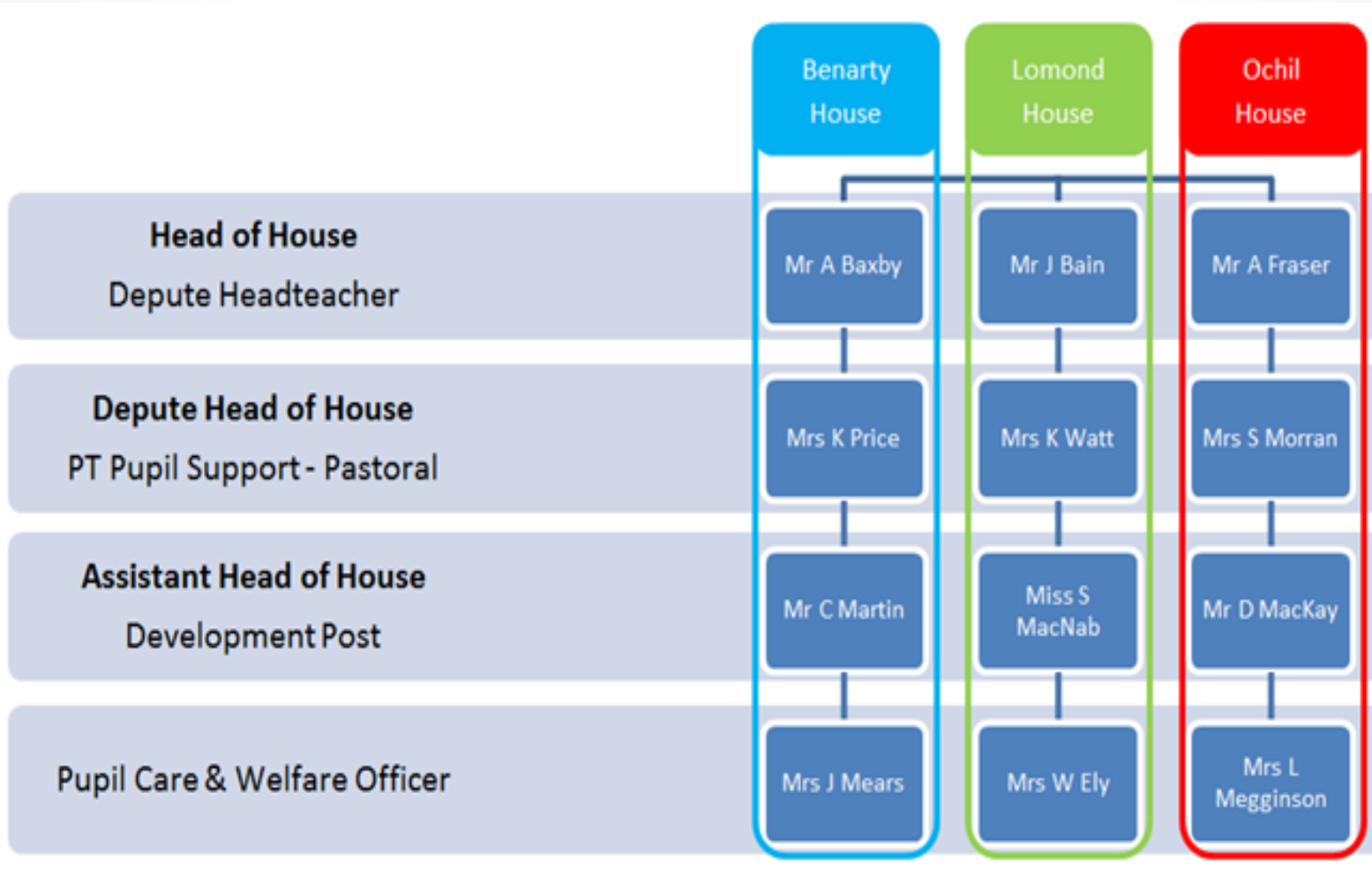


P7 Parents Welcome Evening

Monday 05 June 2017

PUPIL SUPPORT - PASTORAL



Roles and Remits

Guidance is a part of Pupil Support and the title says it all. We support young people with;

- Transitions from primary to secondary school
- Course choice
- Securing a positive destination when leaving school



Pastoral Support

- We support pupils if there are issues with behavior, other pupils, or with staff - and if there are issues at home.
- We recognize the fundamental importance of allowing young people to make their own informed choices, taking responsibility for their own decisions.



Partnership Working

- We work with class teachers, Support for Learning, Senior Management, external agencies – and of course with parents, the most important partnership to ensure we *get it right for every child*.



A word of caution

- We don't have a magic wand. We can't always solve every problem, but we can usually help.

For us to help, we have to know.



Communication

- All telephone calls are logged at the school reception. While it is Perth and Kinross Council Policy to respond within five working days, we endeavour to get back to all parents as soon as possible.
- Appointment meeting system



Support for Learning

Mr Kidd (PT)

Miss Swan, Mrs Newton, Mrs Millar

7 PSA's

Groups

- Well being
- PIT stop
- Young Carers
- Numeracy
- Literacy
- Sensory & Well Being Garden
- Cafe
- Buddying



Referrals and establishing needs

- Pupils referred via Guidance teacher – in house assessments for dyscalculia/dyslexia
- Contact point for external agencies e.g. CAMHS, social work, Parent to Parent
- Establishing needs YPP
- SQA Assessment arrangements for exams in the Senior Phase are subject to ongoing review and further evidence gathered in S4, 5 and 6.